

SARANG PILLARS *Bellview*

Plot No: C1A, Sector 8, Ulwe, Navi Mumbai



SARANG PILLARS *Bellview*

A Stunning
Night View



The Amenities

The Advantages

Building:

- Well designed entrance lobby.
- Automated Elevators with Auto rescue device.
- Textured finish on all dead walls.

Apartments:

- Vitrified tile flooring in Living Room & Bedrooms.
- Gypsum Finished internal walls with acrylic paint.
- Elegant Laminated Main door & Bedroom Doors.
- Sliding French windows with mosquito nets in Bedrooms and Living room.
- TV point in Living room & Bedrooms.
- Electrical point for Air conditioners in Living room & Bedroom.

Kitchen:

- Vitrified tile flooring.
- Granite Platform with S.S. sink of branded make.
- Designer glazed tiles of full height "Beam bottom level" above the Platform.
- Provision for water purifier.

Bathrooms:

- Naturally ventilated bathrooms with exhaust fan provision.
- Designer ceramic wall tiles (upto Door level)
- Ceramic Flooring.
- Hot & cold water mixer.
- Superior Quality sanitary & CP fittings.

Leisure features for the Project:

- Amenities for Luxurious Living.
 - Reserved Space for Children's Play area.
 - Fitness Center.
 - Multi Utility Room.
 - Indoor Games.

Safety:

- Integrated Video Door Phone.
- Firefighting System.
- Electrical backup for lifts & designated common areas.
- Concealed copper wiring with modular switches.
- MCB & ELCB's.
- Surveillance system at strategic location on ground floor [CCTV Cameras].

Project Advantage:

- Luxurious 13 Storied project.
- Specially designed 1BHK Flats with master bedrooms.
- Well planned Amenities for Luxurious Living.
- Plot on 24 mtrs main road.
- Security Surveillance system installed in the project making safe and secure for Children & Family.
- Approx. at a Distance of 700 mtrs from Kharkopar Station.
- Approx. 1km from Ramsheth Thakur International Sports Complex.

Project Connectivity Advantage:

- Navi Mumbai International Airport in close vicinity.
- Trans Harbour Sea Link connecting Mumbai [Wadala - Sewri]. Connecting Wadala to our Project in 20 minutes.
- Approx 12 minutes Drive from Seawoods and Belapur Railway Station.
- Harbour Railway connecting Seawood and Belapur to Ulwe.
- Navi Mumbai SEZ 200 mtrs away.

Sarang Pillars Bellview - A Project by Pillars Group & Sarang Group. A 13 Storied luxurious project on 24 mtrs wide road, approximately 700 mtrs from Kharkoper Station.





◀ **1 BHK FLAT**

Artist's impression



1 BHK FLAT ▶

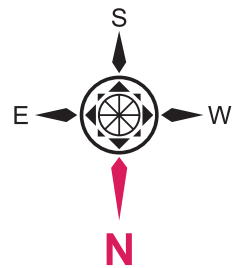
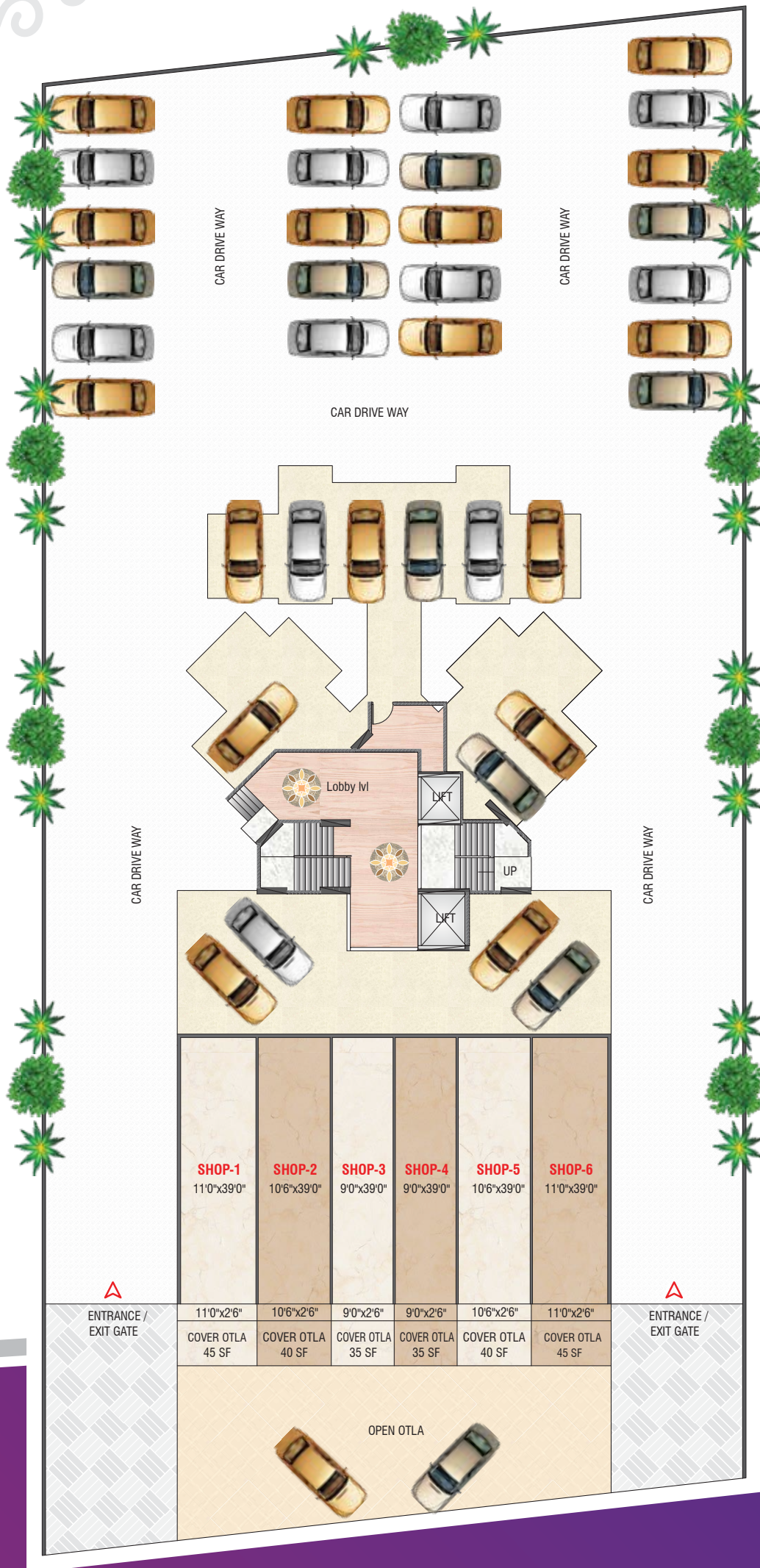
With Master Bed

Artist's impression



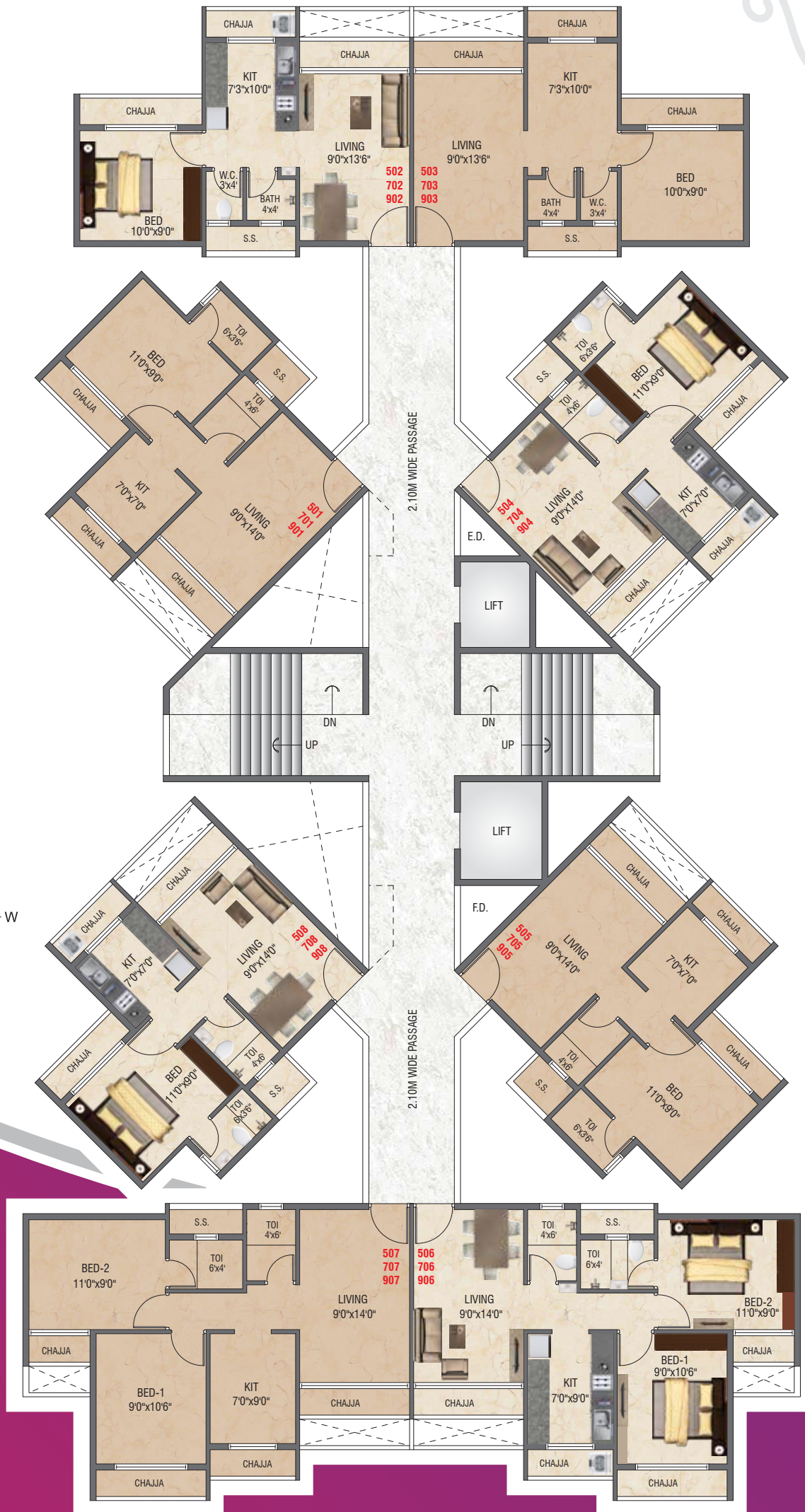
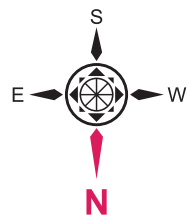
◀ **2 BHK FLAT**

Artist's impression



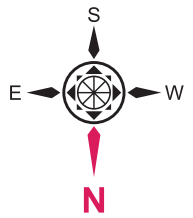
← 24 MTR. WIDE ROAD →

GROUND FLOOR PLAN



ODD FLOOR PLAN

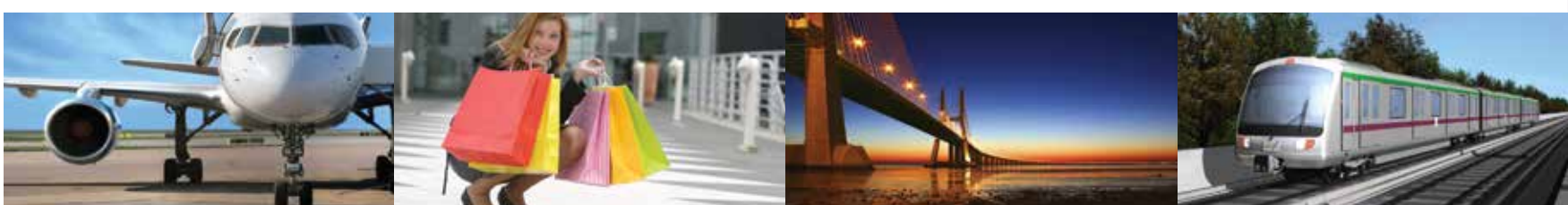
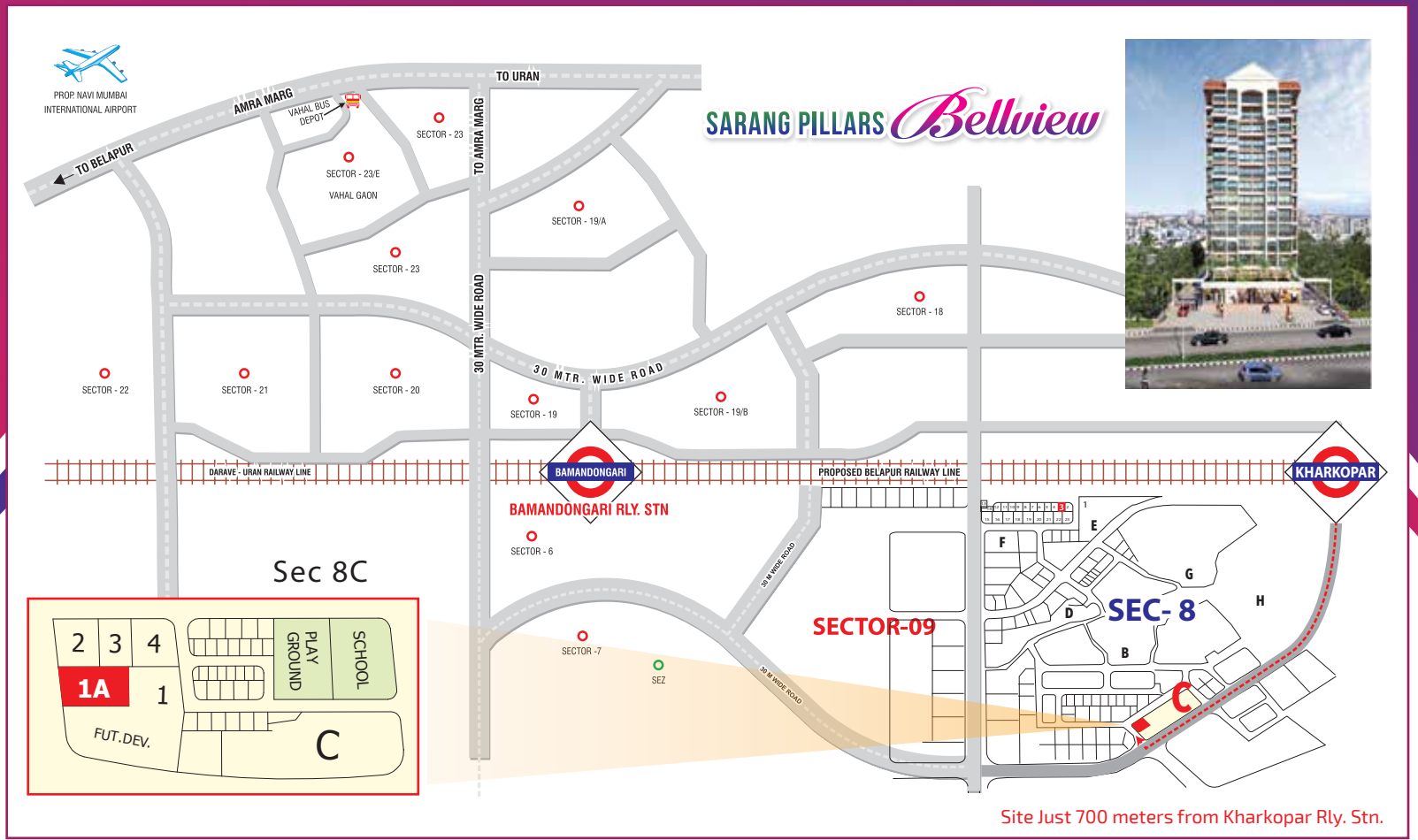
Subject to floor wise changes.



← 24 MTR. WIDE ROAD →

EVEN FLOOR PLAN

Subject to floor wise changes.



MahaRERA No. P52000018499

Project by:



Office : B 221/222, 2nd Floor, Sai Arcade, Near Lifeline Hospital, Panvel, Navi Mumbai
 Site : Plot No. 1A, Sector 8C, Ulwe, Navi Mumbai - 410206
 Email : info@saranggroup.in
www.saranggroup.in

Contact: 9833669987 / 9773519052

Architect : ATUL PATEL ARCHITECTS | RCC Consultant : S. R. CONSULTANTS

This brochure is purely conceptual, indicative and not a legal offering. All illustrations & pictures are artist's impression only. The plans, drawings, amenities etc. are subject to the approval of respected authorities and may be changed without notification if necessary. The Promoter / Architect reserves the rights to add / desire / alter any items / details / specifications / elevation mentioned here in.

SHEMOIL 96194 18431 / 8655001178