



# Sarang Orchid



Plot No. 35, Sector R1, Pushpak Nagar, Karanjade, Navi Mumbai.

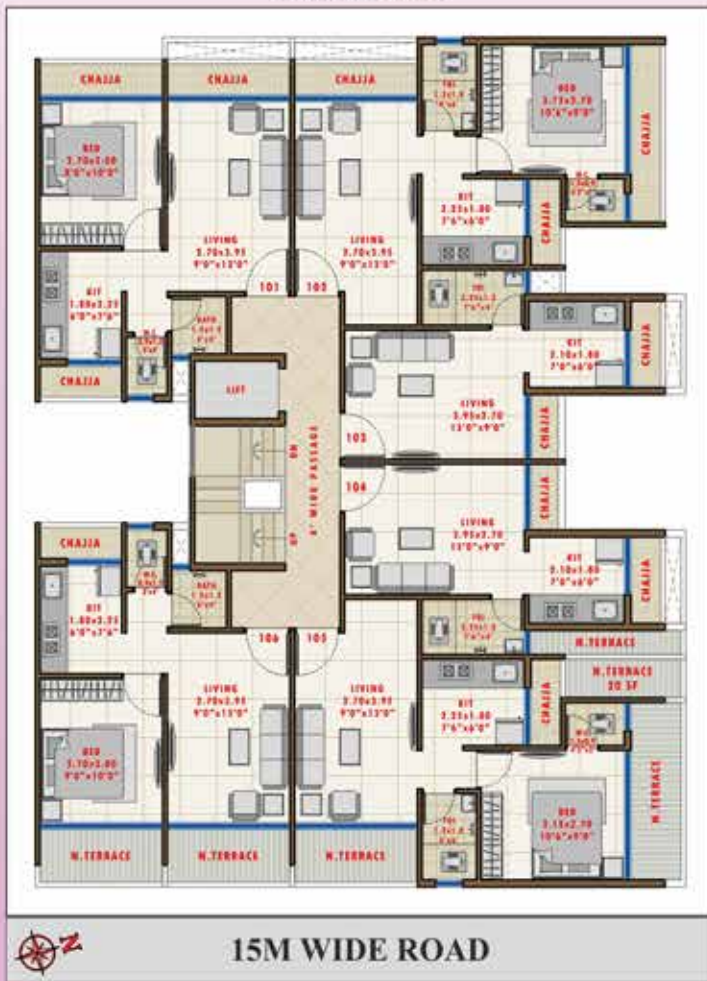


RERA Reg. No.: P52000017462

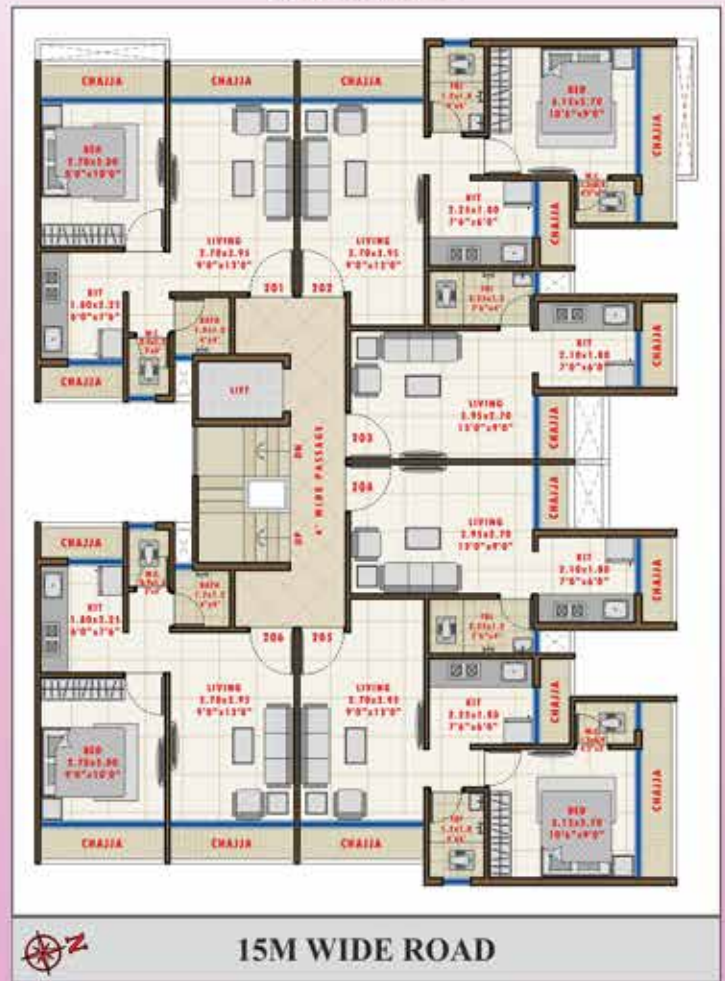
  
Sarang<sup>®</sup>  
GROUP  
*...adding colours to your life*



## 1ST FLOOR



## 2ND FLOOR



## GROUND FLOOR



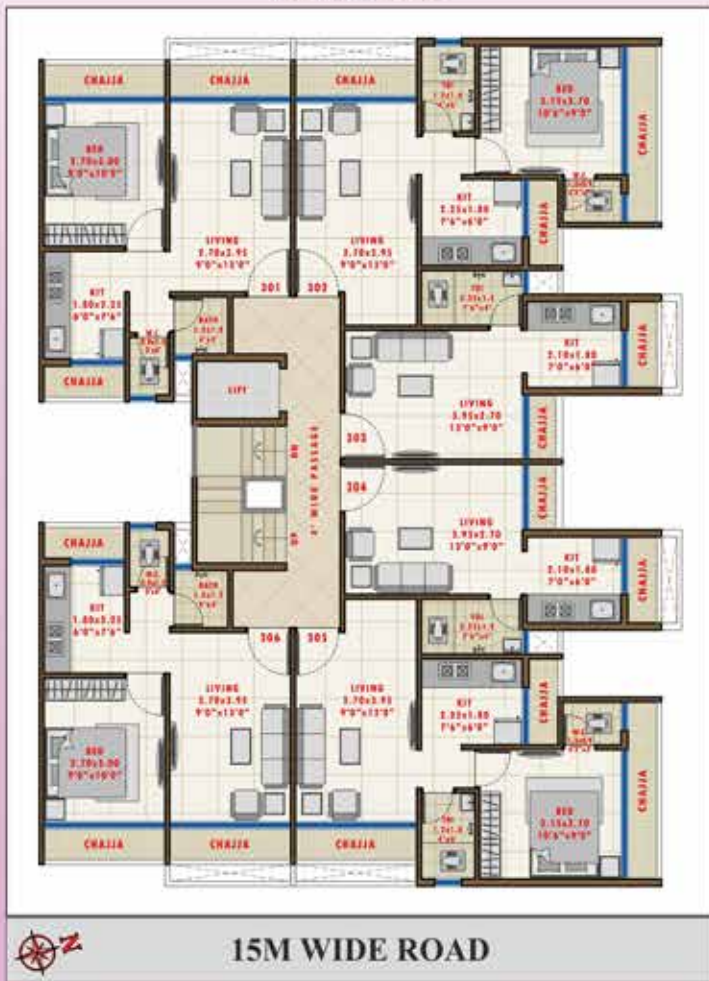
## Amenities

- FLOORING** • Vitrified 2' x 2' Joint free tiles in all rooms.
- KITCHEN** • Granite platform with S.S. sink.
- Designer glazed tiles of full height "Beam Bottom level".
- Good quality sanitary wares.
- W/C & BATH** • Concealed plumbing with hot & cold mixer arrangement.
- Designer glazed tiles walls upto door level.
- DOORS** • Main door with wooden frame & flushed doors with laminates on both sides.
- Bed room: marble frames & flush doors with laminates on both sides.
- Bath & W/C: Marble frames & doors with powder coated aluminium frame with hardener sheets.
- ELECTRICAL** • Concealed copper wiring with modular switches, T.V. points in living area.
- WALL FINISH** • Plastic paint on internal walls & Acrylic paint on external walls.
- WINDOWS** • Powder coated Aluminium sliding windows.





### 3RD FLOOR



### 4TH FLOOR



## Ongoing Projects



**sai**  
Survey no. 849/850, M.G. Road.

PANVEL

**Sarang Aryan**  
Plot No. 02, Sector 6.

KARANJADE

**Krishna Sarang Galaxy**  
Plot No. 104, Sector 18.

ULWE





## Past Projects



Supreme Tower - Kharghar



Advance Galaxy - Kharghar

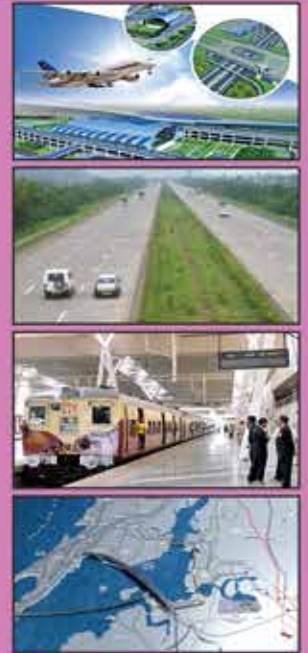


Sarang Aagam Sarang Srushti  
Ulwe, Navi Mumbai

## Advantage Location

**Reach within 5 to 15 minutes.**

- Project Located on 50 ft wide Main Road.
- 300 Mtrs from entry point from entry point of Karanjade.
- School at a distance of 250mtrs approx from Project.
- 5 Minutes drive from International Airport.
- 1.8 Km approx from Panvel Railway Terminals.
- 2.5 Km approx from Khandeshwar Railway Station.
- Adjacent to SH 54 and JNPT Highway.
- 2 Km approx from Mumbai-Puna Highway "NH 4"
- 2 Km approx from Mumbai-Goa Highway " NH 17"
- Banks, Markets, Hospitals, Schools, Colleges, Playground, Garden, Karnala Sports Complex, Railway Station, Restaurants, Hotels at close proximate distance from project site.



Project by



RERA Reg. No.: P52000017462

RCC Consultants  
**S. R. CONSULTANTS**

Developers  
**AARCON**



Architects  
**ATUL PATEL & ASSOCIATES**

Office: B/221-222, 2nd Floor, Sai Arcade, Opp. ST Bus Depot,  
Panvel - 410 206, Navi Mumbai.

Site: Plot No. 35, Sector R1, Pushpakat Vadghar, Karanjade, Navi Mumbai.

Web: [www.saranggroup.in](http://www.saranggroup.in) | E-mail: [info@saranggroup.in](mailto:info@saranggroup.in)

**Contact: 9833669987 | 9773519052**

This communication is purely conceptual and is not a legal offering. It is made only for promotional purposes. The information contained in this communication is only indicative of the kind of development that is proposed and is subject to change. The developers reserve the right to make changes or alterations at their sole discretion.

• CHHEDA GRAPHICS +91 9820977922 •